



**Intellectcheck**  
**Functional Description**

## Overview

**IntellectCheck** is **Evisions** newest version of its industry-leading laser check writing software system for Banner®. **IntellectCheck** is, by far, the most popular laser check solution for Banner®; with over 200 sites around the world.

✓ **IntellectCheck** is the only laser check product designed specifically for use with Banner®

### As a result, IntellectCheck:

- ✓ is easy to use – requiring no additional training
- ✓ is easy to install – requiring no additional hardware
- ✓ is secure – integrating Banner®, Oracle®, and state-of-the-art check security
- ✓ eliminates data import/export
- ✓ adds the important Banner® data you have always wanted to your checks
- ✓ prints to any laser printer on your network or even locally attached to your PC
- ✓ allows you to print the checks in any order that YOU choose
- ✓ works with inexpensive blank stock and fold/seal solutions
- ✓ can be customized, at affordable cost, to print ANY Banner® data you want
- ✓ builds upon the long track record of Evisions previous check products

There are essentially two functional pieces to **IntellectCheck**; the “**IntellectClient**” and the “**IntellectServer**”:

- ✓ The **IntellectServer** component, resides on your Banner® host system. This could be Unix, VMS, or NT. The **IntellectServer** consists of the **Evisions** version of “fabchkp” (for AP checks) or “phpchk1” (for Payroll checks).
- ✓ The **IntellectClient** consists of a Windows-based program that runs on any version of Windows (95, 98, ME, NT4.0, 2000, XP).



The **IntelleServer** process is run directly from Banner® (“fabchkp” or “phpchk1”) job submission. However, instead of producing the standard output list file on your Banner® host, the check information is placed into an Oracle® table. This table is created as part of the initial installation of **IntelleCheck**.

A user can then launch **IntelleClient** on their workstation to print the checks, run reports, reprint checks, create file copies, etc. Because the information is stored in Oracle®, it is very secure. No information is stored at the local workstation and the check administrator controls all access to the data.

Because the checks are printed from a Windows based machine, ANY laser printer attached to the sites network or even locally attached, can be used for printing.

## Installation

Since **IntelleCheck** was written specifically for Banner® and the Windows OS, the installation process is fast and simple. It consists of an Installshield® installer for the **IntelleClient** and the Evisions versions of FABCHKP and PHPCHKL for the **IntelleServer**.

Once the **IntelleClient** is installed, an “Administration Tool” wizard is used to create the required tables in your Oracle® environment and to configure the additional security for the product.

To install the **IntelleServer**, two source code files are transferred to your Banner® server and compiled using the standard Banner® pro\*c compile script. The commands are all included in our installation documentation. Once you have compiled the check processes on the **IntelleServer** you are ready to run laser checks directly from Banner®. That is literally all there is to it.

## IntelleServer

**Evisions** modifies “fabchkp” and “phpchk1” to produce the laser formatting and data you have chosen from among our range of samples. All were developed based on years of experience building each check from the ground up. Now, we have a great range of vastly improved laser check samples, but we can also build special checks with custom data and appearance for a modest additional charge. Just ask.

When the check process is delivered to you by **Evisions**, the **IntelleServer** contains one or two files:

- ✓ “fabchkp.pc” (if you are using AP checks)
- ✓ “phpchk1.pc” (if you are using Payroll checks).

These files are compiled on your system the way any other Banner® process is compiled. They will replace the baseline Banner® process of the same name. After installation, a user will run the “fabchkp” or “phpchk1” process from Banner®, as before. The only difference now is that they will be running their **Evisions IntelleCheck** version of that process. More importantly, since our process runs exactly in the same manner as the Banner® process, no additional training is required.



Normally, when a baseline Banner® process runs, it creates an output list file that resides on your Banner® host. Our process is slightly different in that it creates an output file that is compressed and encrypted, then stored, into one of the Oracle® tables created during installation of **IntellectClient**. Our process then verifies it is in the Oracle® environment and then deletes the original file from the Banner® host itself.

We have taken extra measures to ensure that **only** those who have been granted the proper level of security will be able to view and/or print your checks.

## IntellectClient

Once a user has run the “fabchkp” or “phpchk1” process from Banner®, they can launch the **IntellectCheck** software from their workstation to actually print the checks, file-copies, and reports. The information from the “fabchkp” or “phpchk1” process is stored until YOU are ready to print the checks. In addition, **IntellectCheck** can also automatically generate the Positive Pay file format required by your bank (if purchased).

### **Printing**

Now, checks can be printed when you want and on the printer you want. Use any laser printer, PCL-5 or better, loaded with a magnet (MICR) toner cartridge. Even machines that you can print to from your normal Window applications can now be used to print your checks; requiring no additional setup or configuration.

Checks can be printed in the order you want! You can sort and print by any number of default fields (check number, check amount, or payee name to name a few). If you have other sorting requirements we can easily add additional fields to meet your needs.

And checks can be printed in batches or one at a time. If a printer jams during printing, you can quickly reprint just that check. If you need to print off a check for just one vendor, you can print just that check and wait to print the others from the same batch.

You are in control of what checks get printed, when they get printed, the order they are printed and where they get printed.

### **Security**

**IntellectCheck** was written with security as a primary, overriding, concern. There are numerous security features inherent in both the printed checks themselves as well as in the software. For the purposes of this document, we will focus on the application itself and not the specific “visual” features of the printed check.

Upon launching the **IntellectClient**, the user is required to login using their Banner® username and password. Because **IntellectCheck** was written specifically for Banner®, we are integrated directly into your existing Banner®/Oracle® security. A user must be given permission to use the **IntellectCheck** program.



For even more security, the administrator of the system can limit what the user can execute. The administrator can limit what bank accounts a user can print and/or reprint, grant access to run different reports, or allow a user to create positive pay files to transmit to the bank.

Every function that is performed with **IntellectCheck** is written to an audit table in Oracle®. We keep track of when checks were printed, by whom they were printed, and why they were printed. This information does not reside in a specific file on a specific workstation. It's locked safely away in Oracle®.

We have provided reports that only authorized users can run against this audit data. In addition, because the information resides in Oracle®, you can use your own reporting methods to create additional reports, if you like.





There are two Banner® security objects that get created when you install **IntellectCheck**. A user must be a member of EVICHECK\_USER to be able to log into the menu at all. A user must be a member of EVICHECK\_ADMIN to be able to access any administrative functions. A member of EVICHECK\_ADMIN can set the privileges of other users and which accounts can be accessed.

### **Reports**




With **IntellectCheck**, a user can run audit reports as well as a check register report. This register can be run before you print a check run to ensure that the total number of checks and the total dollar amount reconcile to the Banner® register. This allows you to catch and correct any errors before actually printing any checks!

## **System Requirements:**

### **IntellectClient:**

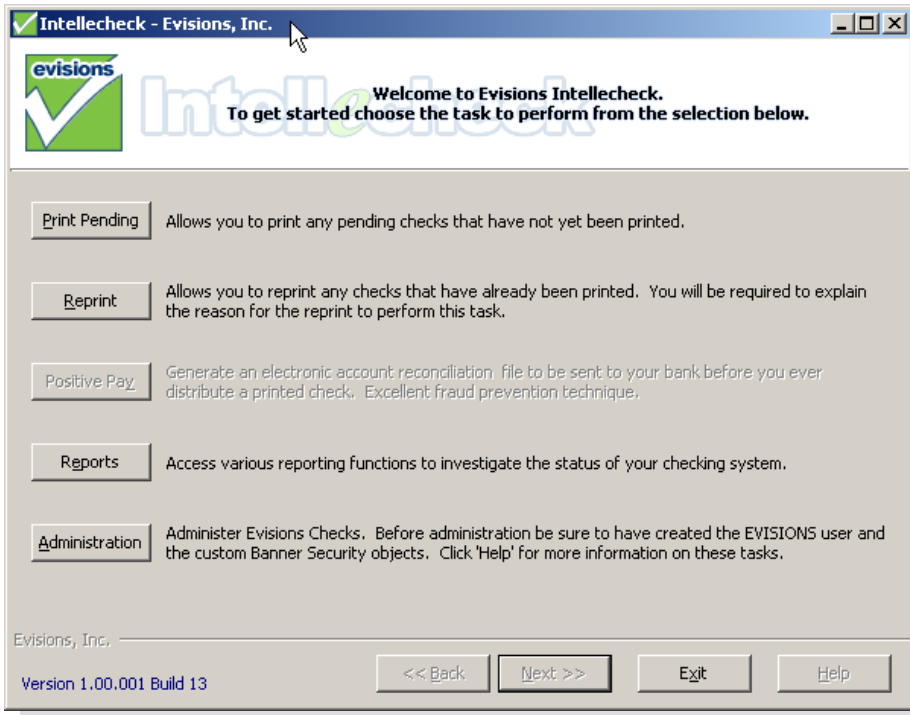
-  Win 95, 98, ME, 2000, XP
-  SQL-Net or Net80 or higher
-  2 MB of Hard Drive space available
-  Laser Printer (PCL-5 or better)

### **IntellectServer:**

-  Version: Any version of Banner
-  Platform: Any platform (NT, Unix, VMS)
-  Oracle Tablespace Size: Approximately 20-30 MB

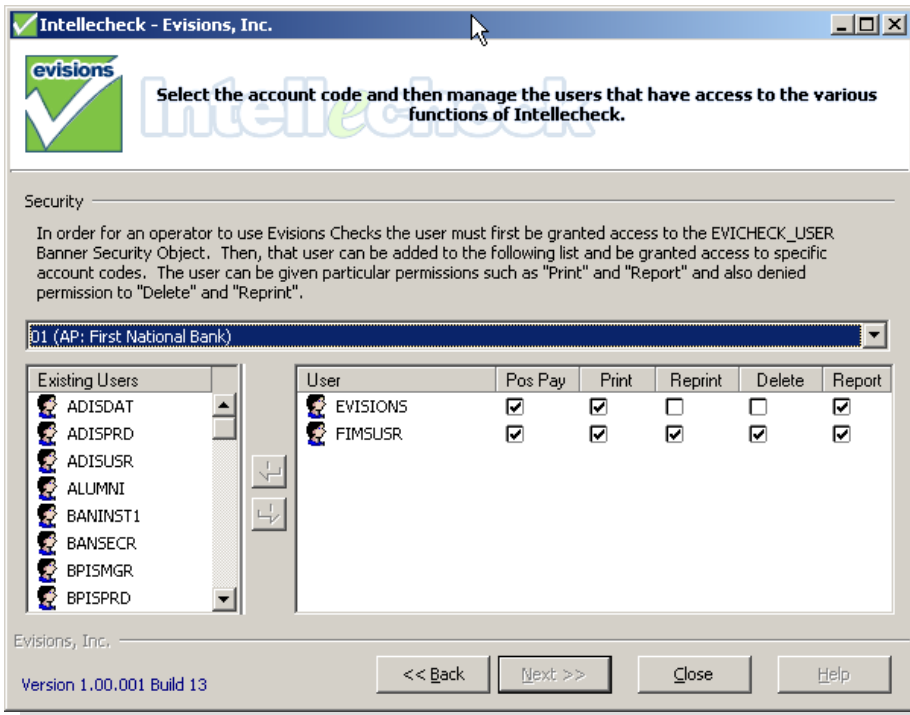
## Screen Captures: (not to scale)

### Main Menu



### Security Administration Menu

(Granting rights at the bank code level)



## Print Menu

Intellectcheck - Evisions, Inc.

**Select the checks that you would like to print from the list of checks below.**

Check#	Check Date	Amount	Status	Type	User Name	Batch
A1022368	06/15/1999	9,109.98	Printed	Check	ehos	1
A1022366	06/15/1999	6.20	Printed	Check	ehos	1
A0022358	06/15/1999	29,000.00	Printed	Check	ehos	2
A0022357	06/15/1999	9,849.47	Printed	Check	ehos	2
A0022355	06/15/1999	28.67	Printed	Check	ehos	2
A0022354	06/15/1999	38.39	Printed	Check	ehos	2
A0022353	06/15/1999	3.00	Printed	Check	ehos	2

Buttons: Select All, Select None, Delete

Evisions, Inc. Version 1.00.001 Build 13

Navigation: << Back, Next >>, Close, Help

## Report Menu

(Choose bank, then select report)

Intellectcheck - Evisions, Inc.

**Select the account to run reports for and then select the report from the list below.**

Account Code: 01 (AP: First National Bank)

Reports:

- Actions Audit
- Check Register

This report is useful for viewing the status of check batches or checks run between a configurable date.


Evisions, Inc. Version 1.00.001 Build 13

Navigation: << Back, Next >>, Close, Help

## Sample Check Register Report

**Print Preview**

Print Preview toolbar: [Print] [List] [Print] [Back] [Forward] [Print] [Print] [Close]



### Check Register Report

Accounts Payable account code "01", Database instance CLAY  
Generated: 6/4/2002 1:32:22 PM

Check Number	Check Date	Printed	Payee	Amount
A0022353	06/15/1999	Yes	Best Book Source	\$ 3.00
A0022354	06/15/1999	Yes	LAKESHORE LEARNING MATERIALS	\$ 38.39
A0022355	06/15/1999	Yes	OFFICE DEPOT	\$ 28.67
A0022357	06/15/1999	Yes	OFFICE DEPOT	\$ 9,849.47
A0022358	06/15/1999	Yes	A Test Check	\$ 29,000.00

**SUMMARY**

TOTAL: \$ 38,919.53

Page 1 of 1