

FormFusion Suite

Appendix A: Getting Started

Before you delve into the advanced concepts found elsewhere, you may like to review just how simple it is to begin. You can literally take one of our pre-designed Banner process templates, import it, add your logo and details, and go into production in minutes. How long further customizations take is entirely up to you.

Select a Database


Log in to a database session. On the left-hand side of the application window you will find a panel with three buttons and a drop-down combo box.



First you need to select the Oracle SQL*Net session you would like to connect to. The sessions in the drop-down list are read from the "tnsnames.ora" file. If the session is not in the drop-down list, you may type it into the edit

box. Select a session from the drop_down box Every time you exit FormFusion the last session used is saved to the Windows(tm) Registry. The next time you return to FormFusion, the session will be displayed in the box automatically.

Log in

After the session has been chosen, click on the Login icon.  Alternatively, you can type the shortcut keys <CTRL> and L. At this point, you will be prompted for a Username and Password. The session drop-down list will become disabled disallowing the option to change the Oracle session.









After the session is logged in, assuming there were no warning messages, you should see a view of the FormFusion table structure. The tree view may or may not contain groups and processes at this point. This will depend on whether your DBA installed the Evisions Sample Forms or have created forms for your organization's use.

Process Tree

This section will discuss the layout and organization of the "Process Tree View." This can also be thought of as the view into FormFusion tables residing in the Oracle session. Each entry in the tree view is called a "tree node" (or "node" for short). Each node represents an entry in one or more of the FormFusion tables.

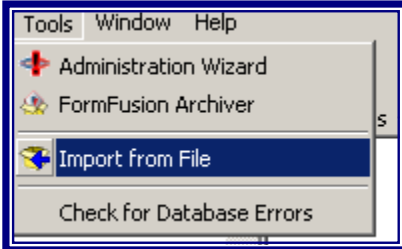
"Process Group Nodes" are containers for other group nodes or process nodes. "Process Nodes" are containers for special print parameter nodes. "Special Print Parameter Nodes" are containers for the process modifier nodes. "Process Modifier Nodes" are all nodes that add a new feature to a special print parameter. Each plug-in provides a different process modifier node type.

A Closer Look

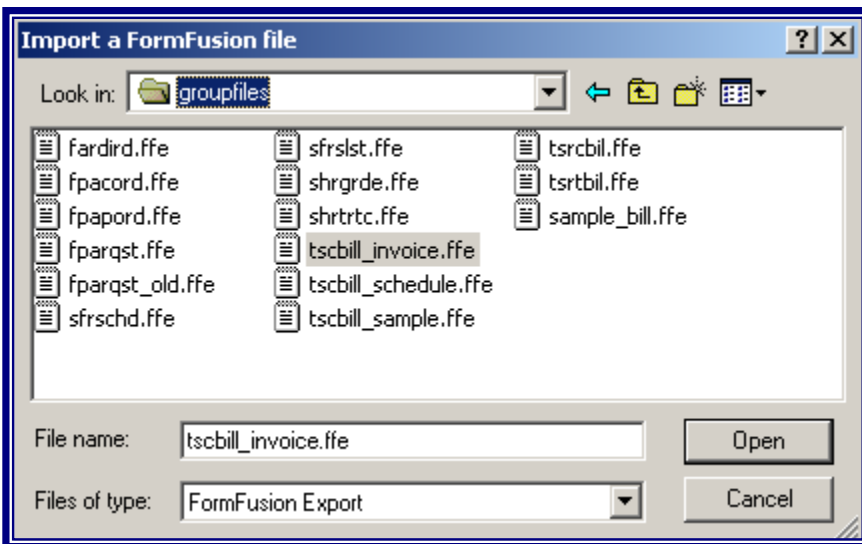
Node type	Description
 Process Group	Each group node is pulled from the EVIPGRP table. A group can contain other groups or processes. A group can contain nothing else and has no configurable properties of its own. When you choose a group node in the tree view, additional options become available in the "Edit" and "Tools" menus. A group can be added to the root level (no parent node).
 Process	Each process node is pulled from the EVISCTP table. A process can only contain a special print parameter. There are no configurable properties to a process. When you choose a group node in the tree view, additional options become available in the "Edit" menu. A process can be added to the root level (no parent node).
 Special Print Parameter (SPP)	Each SPP is pulled from the EVISPP table. An SPP can only contain process modifier nodes. By selecting the node in the tree view, additional options become available in the "Edit" menu. The "properties" of the special print parameter can be modified by either choosing the "Edit Properties" menu option or right-clicking and selecting "Properties" from the popup menu. Also, each type of available process modifier can be selected from the "Edit New" menu or popup menu. For more information on changing properties and adding process modifiers see Working with Special Print Parameters
Process Modifier	There are multiple process modifier types. Each will be described in detail below. In general, each process modifier is pulled from the EVIPMOD table. Each process modifier is a configurable node and may or may not house any child nodes.
CaptureForm Plug-In	
 CaptureForm	The CaptureForm node is linked to EVIPMOD using the EVICFORM table. Choosing "properties" for a CaptureForm node will bring up the CaptureForm properties dialog box. There, you can add any custom SQL queries that should execute for the process and special print parameter when executed on the server. For more information on changing properties and creating the queries, see Using CaptureForm-SQL
FormDirector Plug-In	
 FormDirector	The FormDirector node is linked to EVIPMOD using the EVIFDDIR table. Choosing "properties" for a FormDirector node will bring up the FormDirector properties dialog box. There, you can specify which directors should be used for the process and special print parameter when executed on the server. Each director uses a different table to store its information: EVIFDARC, EVIFDEML, EVIFDFAX, EVIFDPRT, and EVIFDWEB. For more information on changing properties and redirecting output, see Using FormDirector
FormStamp Plug-In	
FormStamp provides for two process modifier nodes. Each FormStamp node is linked to EVIPMOD using the EVIFSTMP table. For more information on these two types of nodes and configuring FormStamp see Using FormStamp .	
 PCLForm	The first node type is PCLForm which is a graphical designing tool allowing for the drawing of graphics, shapes, text, and data fields. The node is linked to EVIFSTMP using the EVIPCLF table. Some properties are available to edit when the PCLForm is closed but most properties are only editable when the node is opened. Open by either double-clicking the node or choosing "Open" from the "Edit" or popup menus.
 MACFile	The second node type is MACFile. This node type is rarely used and is merely a non-editable PCL file. Properties are the same for the MACFile as they are for the PCLForm when the nodes are closed. The MACFile cannot be opened.
MapForm Plug-In	
 MapForm	The MapForm node is linked to EVIPMOD using the EVIMAPF table. Properties for a MapForm are only available when the MapForm is <i>opened</i> . To open a MapForm node either double-click the node or choose "Open" from the Edit or popup menus. The properties of a MapForm node can also be found in the special print parameter node. See Using MapForm for details on configuring and using this plugin.

Importing a sample Group File

Select the process group to import the file beneath. If you would like to import the file to the root level then select the empty area of the process tree view (no node selected).



In the "Tools" menu, click "Import from File". If you want to import a file that was saved in a different folder, locate and open the folder that contains the list of available import group files.



Double-click the file you want to open (**Note:** the filename will have a .ffe extension). The imported file will be placed beneath the currently selected group and the tree structure within that file will be created.

A status screen indicating what is being imported will be displayed. Upon completion, this screen will be closed and the process node will have been imported. In this sample, the process node is named Billing_Invoice.

